



GAT MONTHLY MEMBERSHIP PROGRESS REPORT

Results as of: 4/30/2022

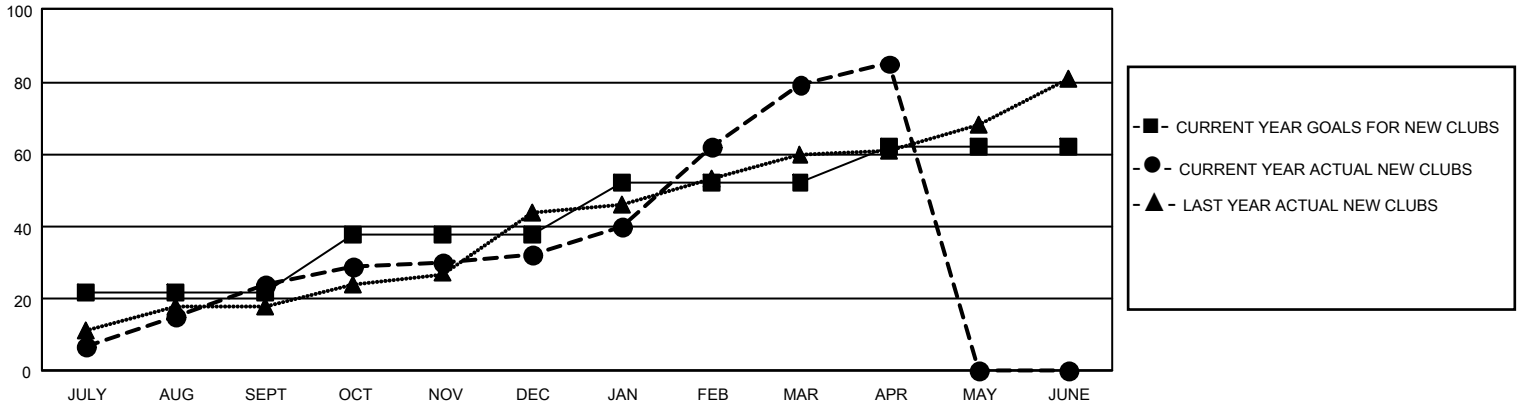
GMT Constitutional Area 6, Group N

REPORT DOES NOT INCLUDE CLUBS IN UNDISTRICTED AREAS.

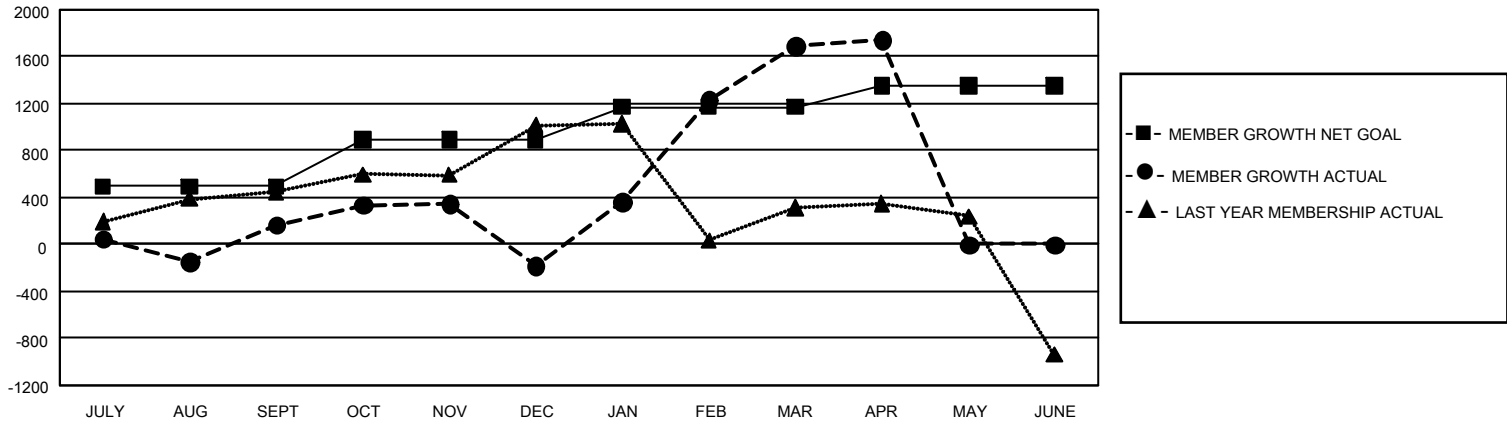
Clubs			
RESULTS FOR 2021-2022			
QUARTER	NEW CLUB GOAL	NEW CLUBS	DROPPED CLUBS
JULY/AUG/SEPT	66	24	44
OCT/NOV/DEC	48	8	47
JAN/FEB/MAR	42	47	8
APR/MAY/JUNE	30	6	1

Members			
RESULTS FOR 2021-2022			
QUARTER	MEMBER GROWTH NET GOAL	MEMBER GROWTH ACTUAL	DROPPED MEMBERS ACTUAL (including transfers)
JULY/AUG/SEPT	495	1,208	952
OCT/NOV/DEC	395	988	1,260
JAN/FEB/MAR	280	2,459	352
APR/MAY/JUNE	180	259	179

GOALS AND ACTUAL NEW CLUBS CUMULATIVE



GOALS AND ACTUAL MEMBERS CUMULATIVE



DROPPED CLUBS: 99	431 CLUBS OF 923 ADDED 1 OR MORE NEW MEMBERS	<u>GENDER DISTRIBUTION</u>	
		MALE 14,434 (66.18%)	FEMALE 7,361 (33.75%)
<u>DROPPED MEMBERS</u>		NON BINARY 0 (0.00%)	PREFER NOT TO ANSWER 15 (0.07%)
DECEASED 44	CLICK HERE FOR CUMULATIVE MEMBERSHIP DATA	TOTAL FAMILY UNIT MEMBERS 10,052	
CLUB CANCELLED 1,188		FAMILY MEMBERS PAYING HALF DUES 5,760	
OTHER 1,511			
TOTAL 2,743			